

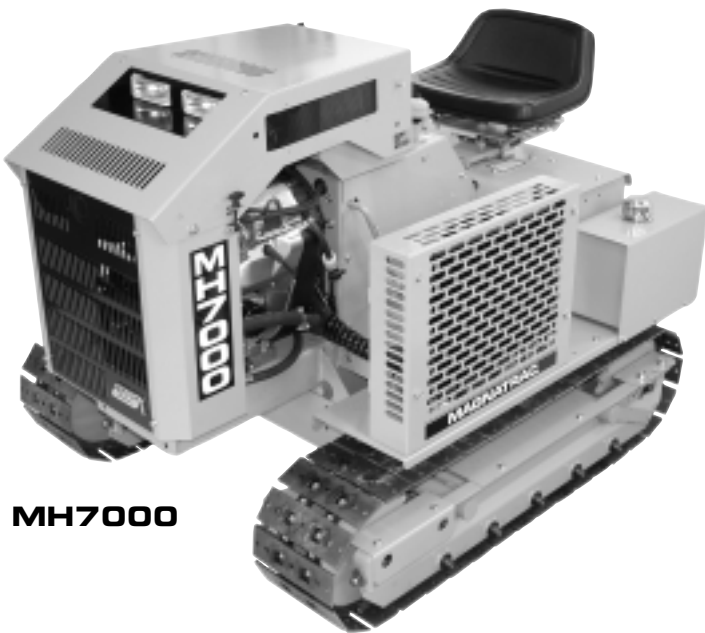


SPECIFICATION BOOK

(Price List Enclosed)

Product Descriptions Beginning 4/1/07

MAGNATRAC® Hydro Crawlers



MH7000

MH7000

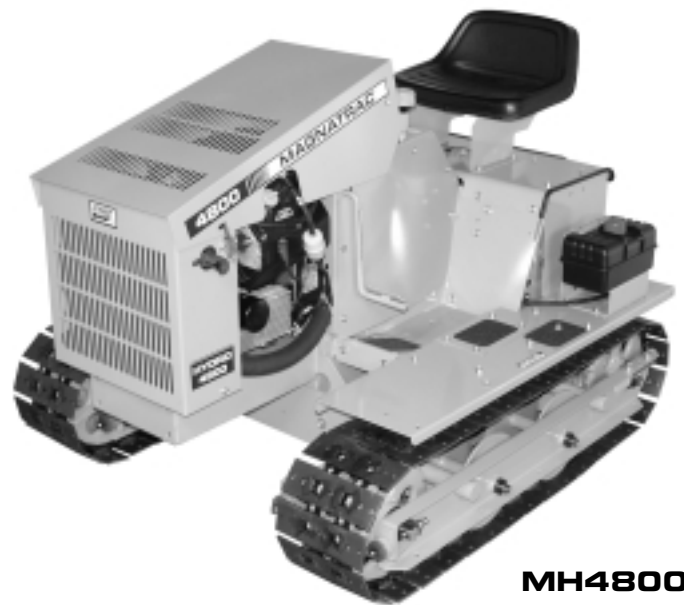
MAGNATRAC® 7000 - Assembled. Includes **31 HP** Briggs & Stratton Vanguard Commercial Engine. "V" twin two cylinder air-cooled gasoline engine with overhead valves, electric starting, 20 amp alternator, full pressure lubrication, and 5" centrifugal multi-stage air cleaner. Dual pump hydraulic system with "expandable" Attachment Control Valve (One SVS10 Standard Valve Section already installed). **NOTE:** Control Valve Sections are added per **REQUIREMENTS** of Attachment Kits purchased (check inside this Specification Book). Track Shoes **not** included - see Track Shoe Kits (next page). Dual halogen lights.

MH7000 - Magnatrac Hydro1850 lbs.

MH4800

MAGNATRAC® 4800 - Assembled. Includes **25 HP** Kohler "V" twin cylinder gasoline engine with overhead valves, electric starting, and 15 amp alternator. Single pump hydraulic system with "expandable" Attachment Control Valve (One SVS10 Standard Valve Section already installed). **NOTE:** Control Valve Sections are added per **REQUIREMENTS** of Attachment Kits purchased (check inside this Specification Book). Track Shoes **not** included - see Track Shoe Kits (next page).

MH4800 - Magnatrac Hydro1685 lbs.



MH4800

IMPORTANT: Though the MAGNATRAC 4800, and 7000 are offered completely assembled, it's still the customer's responsibility to provide competent service ability! The servicing can be provided either by the mechanically inclined customer, or by a local mechanic. All Attachments and Accessories are shipped in an easy-to-assemble "semi-kit" form for lowest cost shipping. We provide manuals & illustrations for complete service and repair so that anyone with reasonable mechanical skill can perform all required service work. Check the MAGNATRAC Specifications & Ratings (pg. 2) for a list of all standard features.

MAGNATRAC® Accessories

SVS10 & FVS10 Attachment Control Valve Section Kits



Meet the Control Valve **REQUIREMENTS** of your Magnatrac Attachments with the SVS10 Standard and FVS10 Float Valve Sections (left).

[MUST BE FACTORY INSTALLED]

- SVS10 - Standard Valve Section Kit**4 lbs.
- FVS10 - Float Valve Section Kit**5 lbs.
- F2S1 - Valve Section Three-Pack Kit** (not shown).
Popular package of two FVS10 Float Sections
and one SVS10 Standard Section14 lbs.

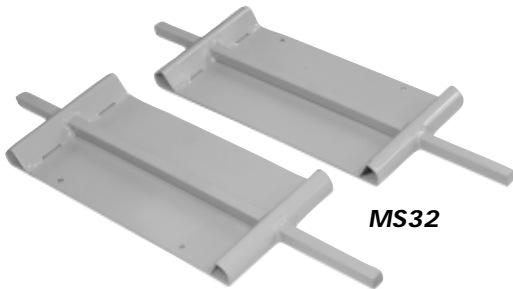
**** According to Federal Laws, no tractor can be operated by employees without a Roll-Over Protective Structure! ****



MS32 Mud Scrapers

Replaces standard track covers with heavy-duty covers incorporating 1" thick solid steel bars to prevent mud and ice build-up between track sprockets.

MS32 Mud Scrapers Kit85 lbs.



ROPS48 Roll-Over Protective Structure

Safety-First! Even a Struck Crawler's low center of gravity and ground-gripping traction are not a substitute for ROPS protection on slopes and uneven ground. Includes seat belt and installation hardware.

ROPS48 Roll-Over Protective Structure Kit175 lbs.

**** CAUTION ****

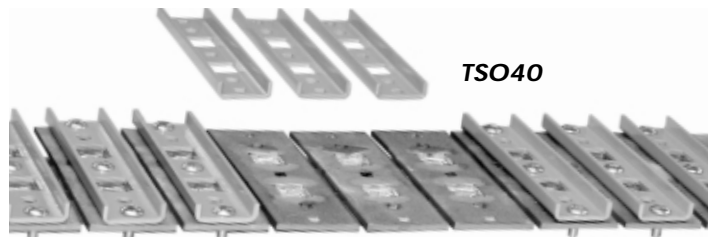


For operator safety, a ROPS48 ROLL-OVER PROTECTIVE STRUCTURE is strongly recommended for all MAGNATRACS!

TSO40 Steel Grouser Track Shoe Kit

Replaceable, channel-shaped Steel Grouser Shoes provide the ultimate in traction. These all-steel shoes will go through mud and bite into the hardest ground for maximum traction.

TSO45 Steel Grouser Track Shoe Kit75 lbs.



NOTE: Though Track Shoes are **strongly recommended**, and provide greatest traction and stiffen Track Pads for working in rock, Magnatracs not so equipped will still pull about 80% of crawler's rated drawbar ability.

TSO45P Non-Marking Track Shoe Kit

Made of 3/4" thick blocks of UHMW Polyethylene encased in all-steel jackets, Non-Marking Track Shoes give you traction in soft going while protecting concrete and asphalt.

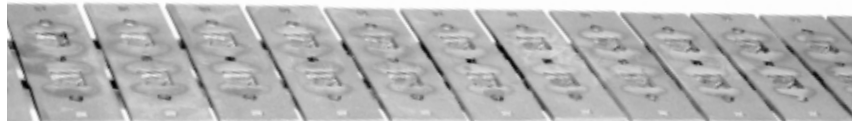
TSO45P Non-Marking Track Shoe Kit80 lbs.

TK557-36 Track Set Kit

Set of two Original Equipment tracks. Made with "Tandem Chain Path" technology from special #557 Chain rated at 33,000 ultimate strength per track.

Buy a second set of tracks for complete versatility. Today you need the tough bite of Grouser Shoes, next week the forgiving touch of Non-Marking Shoes. Don't switch shoes, switch tracks!

TK557-36 Track Set Kit (pair)192 lbs.

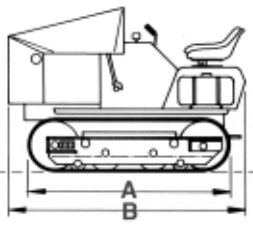
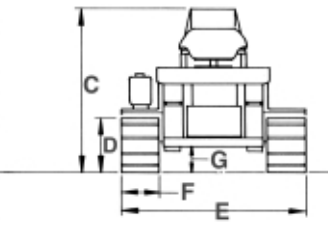


Specifications & Ratings

MH4800

MH7000

Engine	25 HP Kohler Command®, "V" twin cylinders, electric start, 15 amp alternator, pressure lube with filter. [Gasoline]	31 HP Briggs & Stratton Vanguard®, "V" twin cylinders, electric start, 20 amp alternator, pressure lube with filter. [Gasoline]
Air Cleaner	Paper element, oiled foam pre-cleaner	5" Donaldson cyclonic multi-stage air filtration system
Max. Engine Torque	39.5 ft. lbs. @ 2400 RPM	48 ft. lbs. @ 2400 RPM
Track Drive Pump	0.775 cubic inch displacement, 12.08 GPM @ 3600 RPM	1.01 cubic inch displacement, 15.7 GPM @ 3600 RPM
Attachment Pump	not available	0.500 cubic inch displacement, 7.8 GPM @ 3600 RPM
Gas Tank	Remote with fuel pump, 4.5 gal. capacity	Remote with fuel pump, 4.5 gal. capacity
Hydraulic Oil Cooler	Internally mounted, engine fan cooled (optional electric booster fan available). Cooling Core Area - 126 sq. in.	Externally mounted, 16" electric fan cooled Cooling Core Area - 190 sq. in.
Attachment Control Valve	Expandable sectional valve with one (1) Standard Section (included) dedicated to future Backhoe attachment. Rated 12.08 GPM @ 2000 PSI.	Expandable sectional valve with one (1) Standard Section (included) dedicated to current "overdrive" and future Backhoe attachment. Rated @ 7.8 GPM @ 2000 PSI.
Track Motors	10.6 cubic inch displacement, rated at over 3500 PSI	10.6 cubic inch displacement, rated at over 3500 PSI
Travel Speed (calculated)	Regular Drive 1.82 MPH Overdrive not available	Regular Drive 2.4 MPH Overdrive 3.5 MPH
Instrumentation	Hydraulic oil temp. gauge	Ammeter, Hour, Hydraulic oil temp. gauge
Chain Sprockets	Induction hardened steel	Induction hardened steel
Track Sprockets	AR200 pre-hardened steel, plasma cut	AR200 pre-hardened steel, plasma cut
Track Guide & Support Rollers	4-1/2" diameter, 5/8" thick flanges, A400 hardened steel (3) per side	4-1/2" diameter, 5/8" thick flanges, A400 hardened steel (5) per side
Track Chain	Double Lengths #557 Chain, 33,000 lbs ultimate strength per track <i>Optional 40,000 lb heavy track (see HT72 Track Upgrade).</i>	Double Lengths #557 Chain, 33,000 lbs ultimate strength per track <i>Optional 40,000 lb heavy track (see HT72 Track Upgrade).</i>
Track Shoes	9-1/2" wide, 7/16" overall laminated thickness, Grouser & Non-Marking options	9-1/2" wide, 7/16" overall laminated thickness, Grouser & Non-Marking options
Final Drive Chain	No. S80, 18,959 lbs tensile strength	No. S80HK, 22,046 lbs tensile strength
Axle Diameter	7/8" dia. on Idlers, 1-3/16" diameter on Track Sprockets	7/8" dia. on Idlers, 1-3/16" diameter on Track Sprockets
Park/Emergency Brake	Dual 8" diameter disk type	Dual 8" diameter disk type
Battery	295 CCA	700 CCA
Weight (no attachments)	1685 lbs	1850 lbs
Track Tensioning	Coiled steel springs (4)	Coiled steel springs (4)
Track Ground Contact	5.36 sq. ft.	5.36 sq. ft.
Overdrive	Not Available	Continuous use
Seat	Rigid mount, manually adjust front to back positioning via 4 bolts, single height	5-way "no-tools" seat positioning (up/down, forward/back, rotate)

		4800	7000	A	B	C	D	E	F	G	
		55-7/8"	55-7/8"	57"	60"	43"	43-3/4"	15-1/8"	15-1/8"	48-7/8"	48-7/8"
		9-1/2"	9-1/2"	6"	6"	6"	6"	6"	6"	6"	6"

C.F. STRUCK CORP. has a policy of continuous product improvement and reserves the right to change its products, specifications and dimensions at any time without notice or obligation. All dimensions and specifications are based upon best possible performance using the highest performance components available and running at 100% efficiency. Results will vary due to changes in size of engine and components, component wear, oil temperature, etc. If a particular specification or dimension is critical to your application contact the factory for more detailed information.

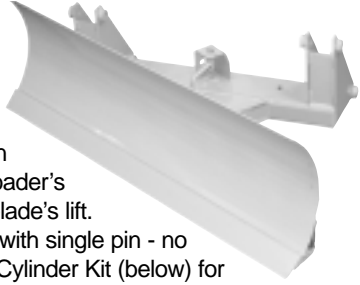
PAYMENT TERMS

Payment in form of Cashier's Check, Money Order, Visa, or Mastercard. 30% deposit required when placing order; payment in full & warranty acknowledgment required before shipment. Prices do not include transportation charges or any state or local taxes. Prices quoted are F.O.B. factory in Cedarburg, WI 53012. All Prices and Specifications are subject to change without notice or obligation.

MAGNATAC® Attachment Kits

LOADER ATTACHMENT KITS - ECONOMY MOUNT

MDB154 Angling Blade Kit



Mounts to Loader in place of bucket. Loader's hydraulics control blade's lift. Adjust blade angle with single pin - no tools! [Add CK29 Cylinder Kit (below) for hydraulic angling] 54" width, 17" height, 3/16" thick.

MDB154 Angle Blade Kit230 lbs.

CK29 Cylinder Kit

REQUIREMENTS



◆ One (1) SVS10 Standard Valve Section

CK29 Cylinder Kit20 lbs.



MB480 Material Bucket Kit

48" wide X 19" high x 26" deep material handling bucket. Has bolt-on replaceable cutting edge. For tougher work add T10 Tooth Bar (see right).

MB480 Material Bucket Kit150 lbs.



T10 Tooth Bar Kit

Bolt-on replaceable bar with 10 hardened "plow steel" teeth. Gives EB460 Excavating Bucket (see right) greater digging ability, and allows MB480 Material Bucket (see left) to break up packed material.

T10 Tooth Bar Kit15 lbs.

LOADER ATTACHMENT KITS - SPEED HITCH MOUNT



NEW

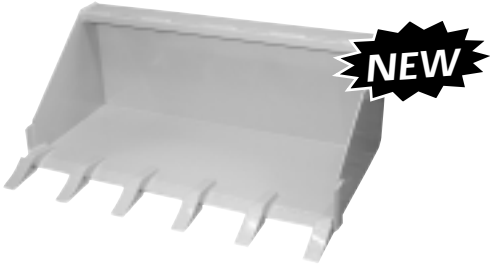
DB480S Debris Bucket Kit

Heavy-duty 48" wide x 19" high x 21" deep stone and debris bucket. 1/2" thick solid steel plate sidewalls cut to form teeth that grip logs & brush. Grated 1/2" steel rod bottom allows dirt and debris to fall through.

REQUIREMENTS

◆ SH44 Speed Hitch (see right)

DB480S Debris Bucket Kit200 lbs.



NEW

SB480TS Speed Bucket Kit

Same heavy-duty bucket as SB480S Speed Bucket (shown at right), but with six professional-quality replaceable teeth made of special "abrasive resistant" cast steel.

REQUIREMENTS

◆ SH44 Speed Hitch (see right)

SB480TS Speed Bucket Kit225 lbs.



SB480S Speed Bucket Kit

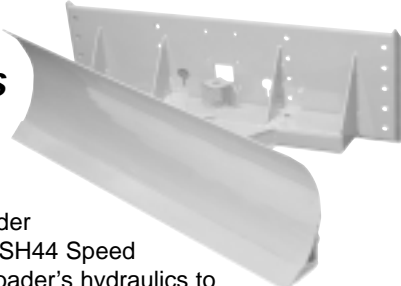
Heavy-Duty 48" wide x 19" high x 21" deep excavating bucket for use on HL900 Loader. Has beveled, heat-treated, "plow steel" cutting edge welded to bucket forward edge.

REQUIREMENTS

◆ SH44 Speed Hitch (see right)

SB480S Speed Bucket Kit170 lbs.

MDB154S Angling Blade Kit



Mounts to Loader equipped with SH44 Speed Hitch. Uses Loader's hydraulics to control blade's lift. Adjust blade angle with single pin - no tools required. [Add CK29 Cylinder Kit (above) for hydraulic angling] 54" width, 17" height, 3/16" thick.

REQUIREMENTS

◆ SH44 Speed Hitch (see right)

MDB154S Angle Blade Kit250 lbs.



NEW

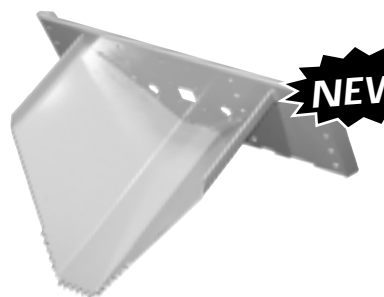
BG48 Grapple Kit

Mounts to DB480S, SB480TS, & SB480S Buckets above. Consists of four solid steel tines robotically welded to heavy-duty frame developing over 1,000 lbs of clamping force. Retracts completely to allow normal loader operations without removal.

REQUIREMENTS

◆ One (1) SVS10 Standard Valve Section
◆ Drill (25) 3/8" holes in mating Bucket

BG48 Grapple Kit145 lbs.



NEW

TR28S Tree & Rock Shovel

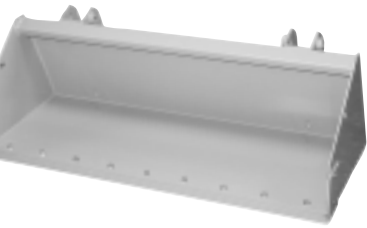
108 lbs. of solid steel plate pressed into massive shovel. Scoops rocks and with sharp teeth, tears out small trees & brush with over 2000 lbs. of breakout force.

REQUIREMENTS

◆ SH44 Speed Hitch (see above right)

TR28 Tree/Rock Shovel Kit185 lbs.

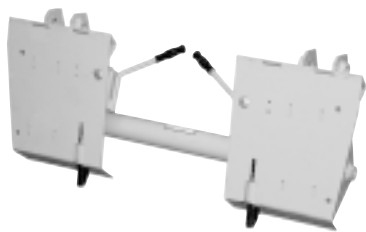
MAGNATRAC® Attachment Kits



460 Excavating Bucket Kit

460" wide X 15" high x 19" deep excavating bucket. Has bolt-on replaceable cutting edge. For tougher work add T10 Tooth Bar (not shown left).

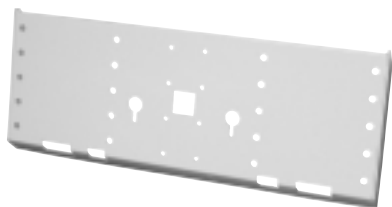
460 Excavating Bucket Kit135 lbs.



SH44 Speed Hitch Kit

Universal Mounting Hitch allows HL900 Loader to utilize third party skid steer attachments including augers, tillers, trenchers, snow blowers, grapples, pallet forks, and many more. Check with attachment manufacturer for tractor requirements.

SH44 Speed Hitch Kit105 lbs.



HP22S Hitch Plate Kit

Universal mounting plate for adapting attachments from other manufacturers to a SH44 Speed Hitch. Includes "keyhole" slots for attaching lift chains. Center hole provided for mounting HR2 Receiver Hitch for class III (2" square) ball mounts and related class III attachments. Specify painted or unpainted.

REQUIREMENTS

- ◆ SH44 Speed Hitch (see above right)

HP22S Hitch Plate Kit75 lbs.
HR2 Hitch Receiver Kit (not shown)5 lbs.

HL900 LOADER Kit

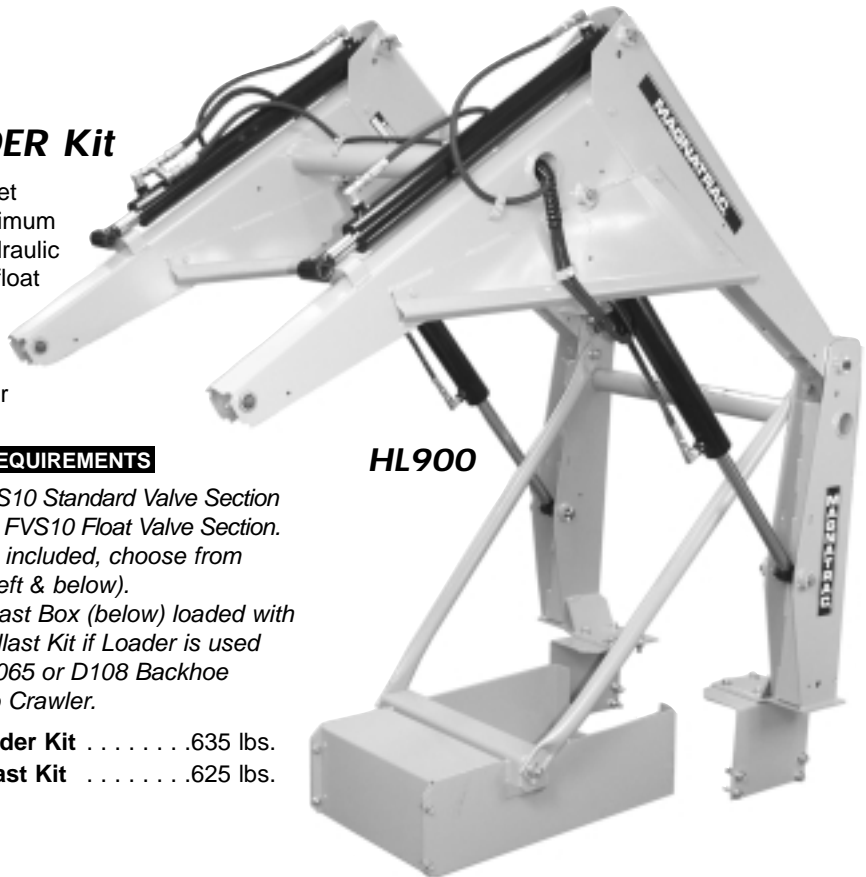
93" Lift, 2300 lbs bucket breakout, 800 lbs maximum lifting capacity. All-hydraulic bucket curl/dump, lift, float and down pressure functions. Lift cylinder safety lock included to hold loader arms up for maintenance.

REQUIREMENTS

- ◆ One (1) SVS10 Standard Valve Section and one (1) FVS10 Float Valve Section.
- ◆ Bucket **not** included, choose from selection (left & below).
- ◆ FB150 Ballast Box (below) loaded with RW150 Ballast Kit if Loader is used without D1065 or D108 Backhoe mounted to Crawler.

HL900 Loader Kit635 lbs.

FW20 Ballast Kit625 lbs.



HL900

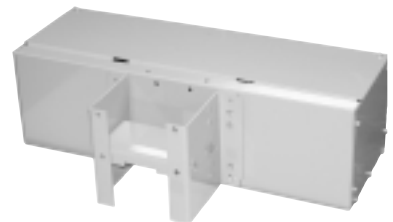
FB150 Ballast Box Kit

Required rear counterweight when using HL900 Loader as independent attachment. Specify Independent (shown right) or RH65 Rear Hitch mounting style. FB150 Ballast Box not required if HL900 Loader and D1065 or D108 Backhoe are mounted simultaneously.

Does **not** include steel ballast - order RW150 (below).

FB150 Ballast Box Kit102 lbs.

RW150 Ballast Kit850 lbs.

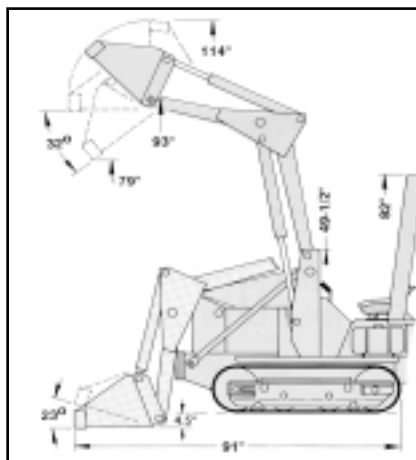


FB150

PF46S Pallet Fork Kit

Heavy-duty pallet forks turn your HL900 Loader into a versatile forklift. Mounts to SH44 Speed Hitch in just seconds.

PF46S Pallet Fork Kit425 lbs.



LOADER SPECIFICATIONS

LIFT CAPACITY (to full height)	
HL900800 lbs
BREAKOUT CAPACITY (arms)	
HL9002000 lbs
BREAKOUT CAPACITY (bucket)	
HL9002300 lbs
Bucket Capacity (heaped)	
MB4809.5 cu. ft.
EB4605.9 cu. ft.
SB480S8.0 cu. ft.

MAGNATRAC® Attachment Kits

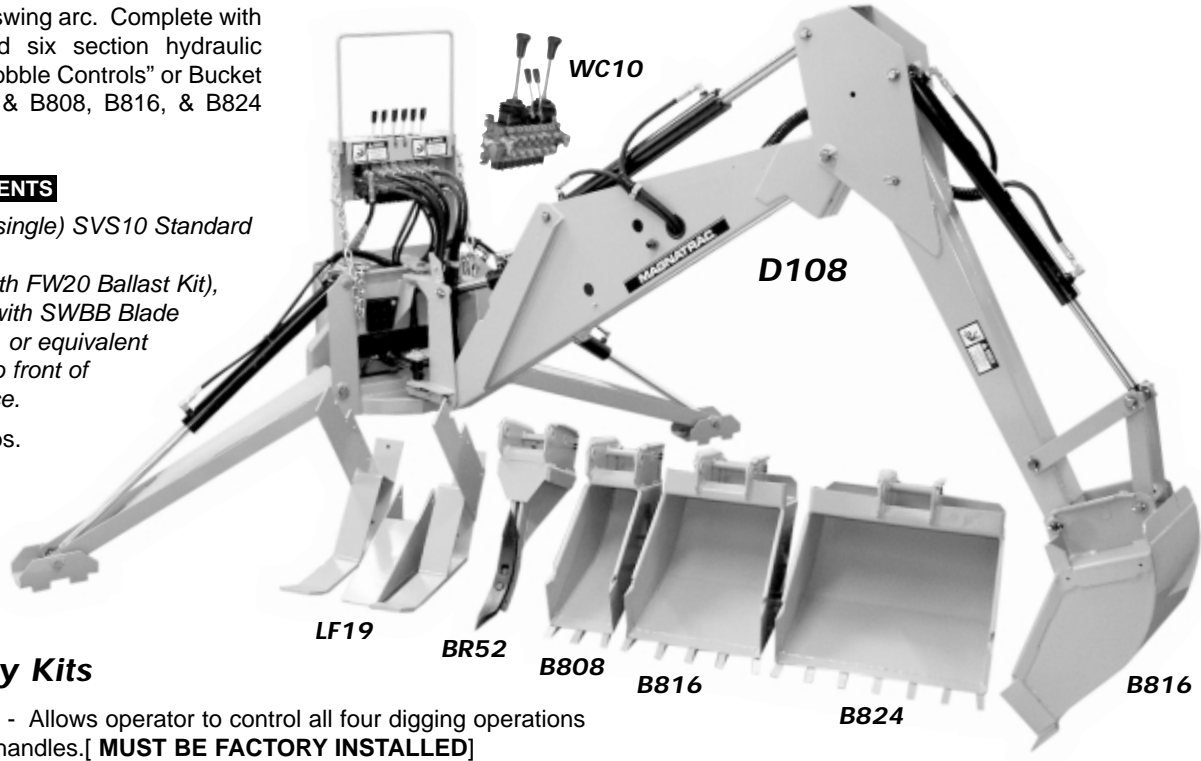
D108 BACKHOE Kit

Eight foot digging depth, 164° swing arc. Complete with cylinders, hoses, fittings, and six section hydraulic valve. Does **not** included "Wobble Controls" or Bucket (see WC10 Wobble Controls & B808, B816, & B824 Buckets below).

REQUIREMENTS

- ◆ Uses Crawler's existing (single) SVS10 Standard Valve Section.
- ◆ HL900 Loader (loaded with FW20 Ballast Kit), SWB54 Six-Way Blade (with SWBB Blade Extension & Weight Box), or equivalent counterweight mounted to front of Crawler for proper balance.

D108 Backhoe Kit865 lbs.



D108 Backhoe Buckets & Accessory Kits

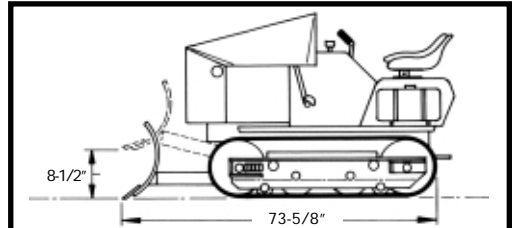
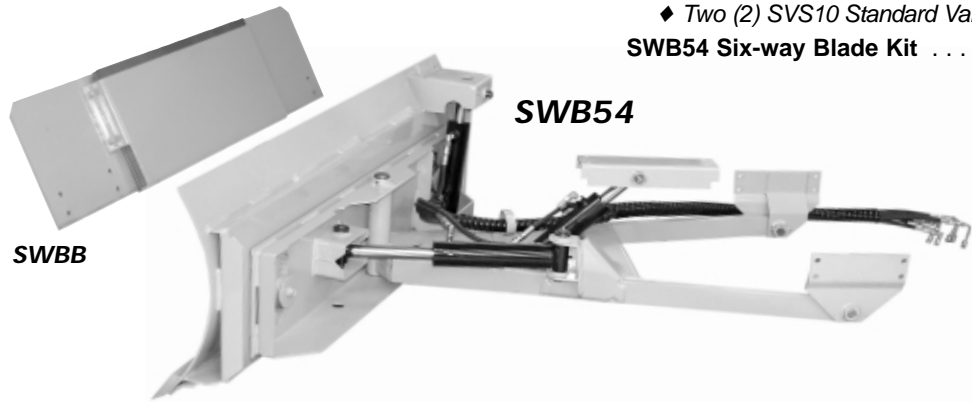
- WC10 Wobble Controls Kit** - Allows operator to control all four digging operations with only two control handles. [**MUST BE FACTORY INSTALLED**]
- B808 8" Bucket Kit** - Eight inch digging width55 lbs.
- B816 16" Bucket Kit** - Sixteen inch digging width75 lbs.
- B824 24" Bucket Kit** - Twenty-four inch digging width95 lbs.
- LF19 Log Fork Kit** - Two "forks" that bolt to interior of B816 or B824 Buckets (above) and an adjustable "thumb" mounted to the Backhoe's dipper. [Requires drilling ten 1/2" holes in Bucket.]85 lbs.
- BR52 Frost / Chisel Tooth Ripper Kit** - Heavy-duty single tooth ripper with two replaceable teeth: (1) 16" x 2" x 1/2" thick "plow steel" tooth for stone & frost picking & hardpan penetration to 18"; the other 15" x 2" x 1/2" thick serrated edge tooth, allows root cutting to depths of 18". Mounts in place of Bucket on Backhoe.35 lbs.

SWB54 SIX-WAY BLADE Kit

Extra heavy-duty, fully reinforced 54" wide x 22" high x 1/4" thick solid steel blade with 3/4" thick x 4" wide heat-treated "plow steel" cutting edge. Mounts directly to track frame. Complete with lift, tilt, and angle cylinders, hoses, fittings, mounting hardware. Features an extra heavy-duty front hitch system with total control of : lift, float, down-pressure, 25°left & 25° right angling and 9° of tilt above and 9° below horizon. [Cannot be used with a Loader in place...use MDB154 or MDB154S Angling Blade Kits for dozing in loader applications.]

REQUIREMENTS

- ◆ Two (2) SVS10 Standard Valve Section and one (1) FVS10 Float Valve Section.
- SWB54 Six-way Blade Kit525 lbs.



SIX-WAY BLADE SPECIFICATIONS	
BLADE WIDTH54"
TILT ANGLE (above/below horizon)9°
BLADE ANGLE (left/right)25°
LIFT (above/below grade)8-1/2" / 4"
LIFT FORCE (at cutting edge)255 lbs

SWBB Blade Extension & Weight Kit

Blade extension increases blade height capacity by 9"; perfect for dozing bark chips, grain, snow, etc. Weight Box and **included** steel "ballast" increases Blade's down pressure by 221 lbs. and also provides front counter-weight for D108 and D1065 Backhoes.

SWBB Blade Extension / Weight Box Kit221 lbs

MAGNATRAC® Attachment Kits

D1065 BACKHOE Kit

80" digging depth, 120° swing arc. Complete with cylinders, hoses, fittings, and six section hydraulic valve. Does **not** include "Wobble Controls" or Bucket (see WC10 Wobble Controls & B612 Bucket below).

REQUIREMENTS

- ◆ Uses Crawler's existing (single) SVS10 Standard Valve Section.
- ◆ HL900 Loader, SWB54 Six-Way Blade, or equivalent counterweight mounted to front of Crawler for proper balance (see FW20 Ballast Kit).

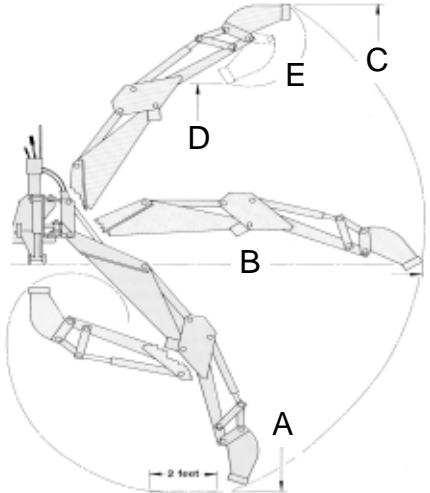
D1065 Backhoe Kit455 lbs.

D1065 Backhoe Buckets & Accessory Kits

WC10 Wobble Controls Kit - Allows operator to control all four digging operations with only two control handles. **[MUST BE FACTORY INSTALLED]**

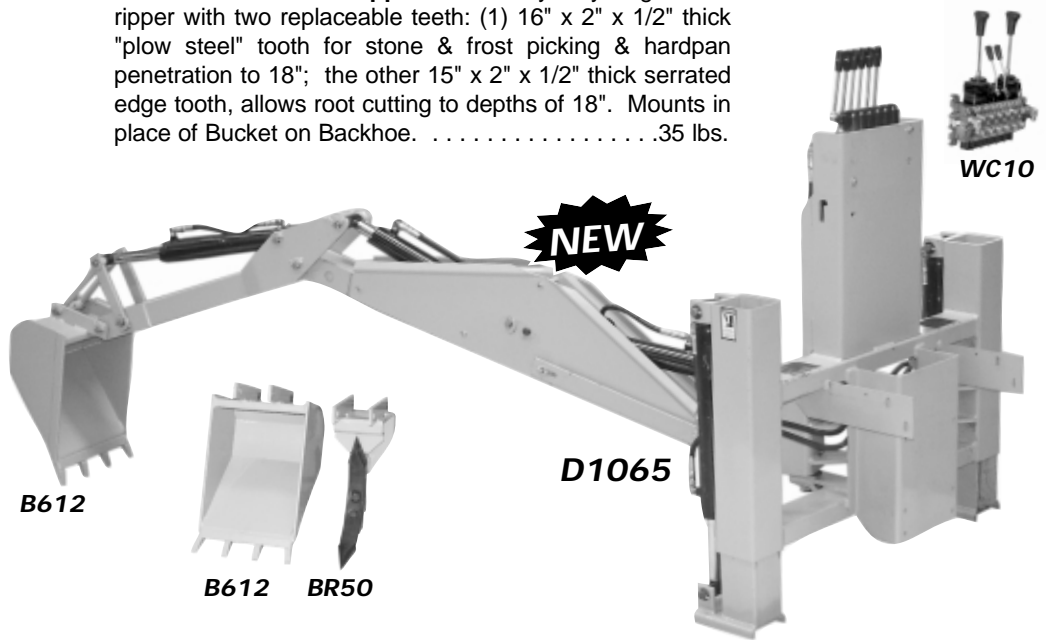
B612 12" Bucket Kit - Twelve inch digging width40 lbs.

BR50 Frost / Chisel Tooth Ripper Kit - Heavy-duty single tooth ripper with two replaceable teeth: (1) 16" x 2" x 1/2" thick "plow steel" tooth for stone & frost picking & hardpan penetration to 18"; the other 15" x 2" x 1/2" thick serrated edge tooth, allows root cutting to depths of 18". Mounts in place of Bucket on Backhoe.35 lbs.



BACKHOE DIMENSIONS					
	A	B	C	D	E
D106	80"	114"	103"	75"	162°
D108	99"	140"	118"	85"	200°

BACKHOE RATINGS		
	D1065	D108
BUCKET FORCE	2500 lbs	3200 lbs
DIPPER FORCE	1250 lbs	2250 lbs
LIFT (@ bucket pivot)	135 lbs	250 lbs
LIFT (@ dipper pivot)	210 lbs	400 lbs
SWING ARC	120°	164°
STABILIZER SPREAD	41-1/2"	119"
TRANSPORT WIDTH	41-1/2"	48-1/2"
BUCKET CAPACITIES (HEAPED)		
B808	-	0.67 cu. ft.
B612	1.16 cu. ft.	-
B816	-	1.54 cu. ft.
B824	-	2.51 cu. ft.



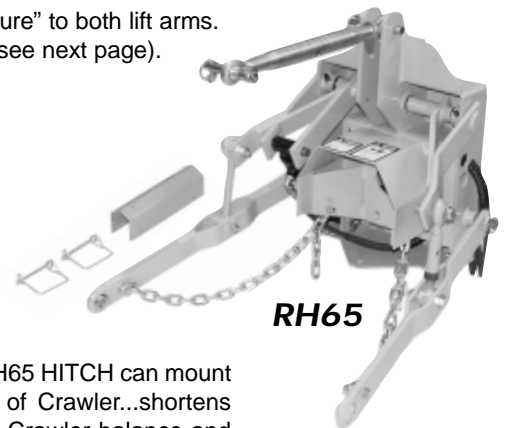
RH65 REAR HITCH Kit

Full sized, all-hydraulic, three point Category #1 Rear Hitch providing "lift, float, and down pressure" to both lift arms. Check with factory for proper front counterweighting. Does **not** include PTO70 Power Takeoff (see next page). Includes cylinder safety lock to hold hitch "up" when disconnecting hydraulic source.

REQUIREMENTS

- ◆ One (1) FVS10 Float Valve Section.
- ◆ HL900 Loader, SWB54 Six-Way Blade or equivalent counterweight mounted to front of Crawler for proper balance.

RH65 Rear Hitch Kit240 lbs.



RH20 Accessory Kit

Set of shorter "lift arms" and "center link body" so that RH65 HITCH can mount its attachments approximately 8 inches closer to rear of Crawler...shortens overall length of Crawler and attachment and improves Crawler balance and maneuverability. Not for PTO70 Power Takeoff applications!

RH20 Accessory Kit27 lbs.

NOTE: Attachments for the RH65 REAR HITCH are of the standard Category #1 type and are readily available locally at most farm equipment dealers.

MAGNATRAC® Attachment Kits



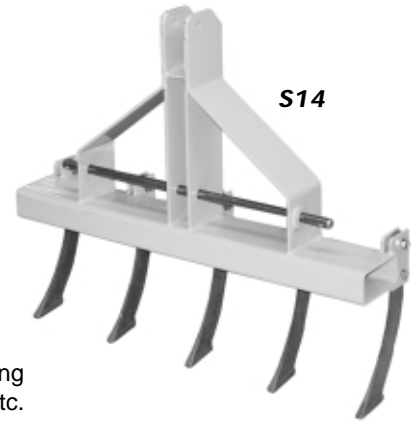
PTO70

PTO70 Power Takeoff Kit

Full power hydraulic motor with standard 1-3/8" diameter, six splined shaft. Mounts in special cavity in RH65 REAR HITCH. Comes complete with hoses, fittings and all mounting hardware.

REQUIREMENTS

- ◆ HC74 Hydraulic Circuit Kit (see below)
- PTO70 Power Takeoff Kit24 lbs.



S14

S14 Scarifier / Ripper Kit

Heavy-duty five tooth Scarifier / Ripper. Five scarifier teeth are interchangeable on heavy-duty mounting frame to create a variety of ripping patterns. Useful for shattering hard, dry soil, compacted driveways, etc.

- S14 Scarifier / Ripper Kit 115 lbs.

HC74 HYDRAULIC CIRCUIT Kit

Complete with hoses, fittings, power beyond plug, rotary valve and all mounting and electrical safety switch hardware. This Hydraulic Circuit is required for operation of PTO70 POWER TAKEOFF (see above) and can also be used for powering NH3A REMOTE AUGER DRIVE or devices constructed by the customer...check with factory for proper applications. **[Factory installation recommended]**

- HC74 Hydraulic Circuit Kit21 lbs



NH3A

NH3B

NH3C

NH3A REMOTE AUGER Kit

Complete hydraulic auger drive assembly which can be mounted to your Loader Bucket or in place of your D108 Backhoe Bucket. Does not require a Rear Hitch or Power Takeoff...Loader and Backhoe can remain in place. Does not include Auger (see below). *Not Manufactured by C.F. Struck Corp*

REQUIREMENTS

- ◆ HC74 Hydraulic Circuit Kit (see above)
- ◆ HL900 Loader, or D108 Backhoe
- NH3A Remote Auger Kit 160 lbs.

Augers for NH3A Remote Auger

- NH3B AUGER - 12" dia. cut, alloy steel point and cutting edge, 42" length.50 lbs.
- NH3C AUGER - Same as NH3B (above), but with 9" dia. cut, 42" length.37 lbs.
- NH3D AUGER - 24" auger, perfect for planting small trees, 30" length (not shown).75 lbs.

What do I do next?

Here at C.F. Struck Corp we do not believe in high pressure sales. Choosing the crawler that is right for you takes time and planning. We want to do everything we can to help, so tell us what you need.

#1 I need more information

If you haven't done so already, please ask for our FREE planning kit and introductory DVD. It will have every piece of printed literature we have to offer, and should answer most any question you may have. Make sure and take a look at our website for even more information

www.StruckCorp.com

If you have received our planning kit and your questions still aren't answered move on to #2.

#2 I have a question

So you have read everything, combed the web site for every piece of information you could find, watched the DVD so many times you have it memorized, and you still have questions.

Pick up the phone and give us a call or send us an email.
(262) 377 - 3300

info@StruckCorp.com

Whether you want to know a performance specification, or if it will fit in your garage we'll find the answer.

#3 I am almost ready to buy

If you've decided which Struck Crawler and attachments you need then we would like to prepare you a FREE quote. This way we double check everything for compatibility and optimum performance. We'll also do a little research and find the best shipping rate for your tractor and location.

It's FREE, and we won't bother you again, unless you ask us to.

LIMITED WARRANTY FOR NEW STRUCK CRAWLERS and/or ATTACHMENTS

(Effective with shipments made after January 1 , 2007)

A. GENERAL PROVISIONS

C.F. Struck Corp. will repair or replace, at its option, for the original purchaser of a new Struck Crawler and/or Attachment, any covered part or parts found upon examination at our factory in Cedarburg, Wisconsin, to be defective in material or workmanship or both; this is the exclusive remedy. Warranty service must be performed by the C. F. Struck Corp. at their factory in Cedarburg, Wisconsin 53012. Warranty service will be performed without charge for parts or labor. The purchaser will be responsible, however, for transportation charges to and from the factory.

B. WHAT IS WARRANTED

All parts of any new Struck Crawler and/or Attachment are warranted for one (1) year, with the following exceptions: Belts, which are warranted for 90 days (excludes normal wear and tear); Engines, which are warranted by their manufacturer; and Batteries, which are provided on a complimentary basis and carry no warranty whatsoever. C. F. Struck Corp. reserves the right to make product design and specification changes without notice and without obligation on their part to present product owners. The Warranty term begins on the date the product is delivered to the purchaser.

C. WHAT IS NOT WARRANTED

(1) Used Products; (2) Any product that has been altered or modified in ways not approved by C. F. Struck Corp.; (3) Depreciation or damage caused by normal wear, lack of reasonable and proper maintenance, failure to follow the product's Operator's/Technical Manual instructions, failure to upgrade crawler with parts furnished at no charge, misuse, lack of proper protection during storage, or accident (4) Normal maintenance parts and service; (5) Use of Struck Crawler and/or Attachments in certain industrial-type applications may affect Warranty coverage.

D. RETURNS AND REFUNDS

In the event of defective materials or workmanship the purchaser agrees to allow C.F. Struck Corp the opportunity to correct the defect in a timely manner at the expense of C.F. Struck Corp. It is at the discretion of C.F. Struck Corp to either correct the defect or refund the purchaser.

To return a Struck Crawler and/or attachment for reasons other than defect the purchaser will be financially responsible for an 8% restocking fee, and for shipping the Struck Crawler and/or Attachment to the C.F Struck Corp. factory in Cedarburg, Wisconsin 53012. No Returns after 90 days.

E. SECURING WARRANTY SERVICE

To secure Warranty service, the purchaser must:

- (1) Report the product defect to the factory in Cedarburg, Wisconsin (262) 377-3300.
- (2) Make the part available to the factory in a reasonable period of time.

F. LIMITATION OF IMPLIED WARRANTIES AND OTHER REMEDIES

To the extent permitted by law, neither C. F. Struck Corp. nor any company affiliated with it makes any Warranties, representations or promises as to the quality, performance or freedom from defect of the products covered by this Warranty. IMPLIED WARRANTIES OF MERCHANTABILITY AND FITNESS FOR A PARTICULAR PURPOSE, TO THE EXTENT APPLICABLE, SHALL BE LIMITED IN DURATION TO THE APPLICABLE PERIOD OF WARRANTY SET FORTH ON THIS PAGE. THE PURCHASER'S ONLY REMEDIES IN CONNECTION WITH BREACH OR PERFORMANCE OF ANY WARRANTY ON C. F. STRUCK CORP. PRODUCTS ARE THOSE SET FORTH ON THIS PAGE. IN NO EVENT WILL C. F. STRUCK CORP. OR ANY COMPANY AFFILIATED WITH IT BE LIABLE FOR INCIDENTAL OR CONSEQUENTIAL DAMAGES.

(Note: Some states do not allow limitations on how long an implied Warranty lasts or the exclusion or limitation of incidental or consequential damages so the above limitations and exclusions may not apply to you.) This Warranty gives you specific legal rights, and you may also have other rights which vary from state to state.

G. ASSEMBLY RESPONSIBILITY

Though the MAGNATRAC 4800, and 7000 are offered completely assembled, it's still the customer's responsibility to provide competent service ability! The servicing can be provided either by the mechanically inclined customer, or by a local mechanic. All Attachments and Accessories are shipped in an easy-to-assemble "semi-kit" form for lowest cost shipping. We provide manuals & illustrations for complete service and repair so that anyone with reasonable mechanical skill can perform all required service work. Check the MAGNATRAC Specification & Ratings (in Specification Book) for a list of all standard features.